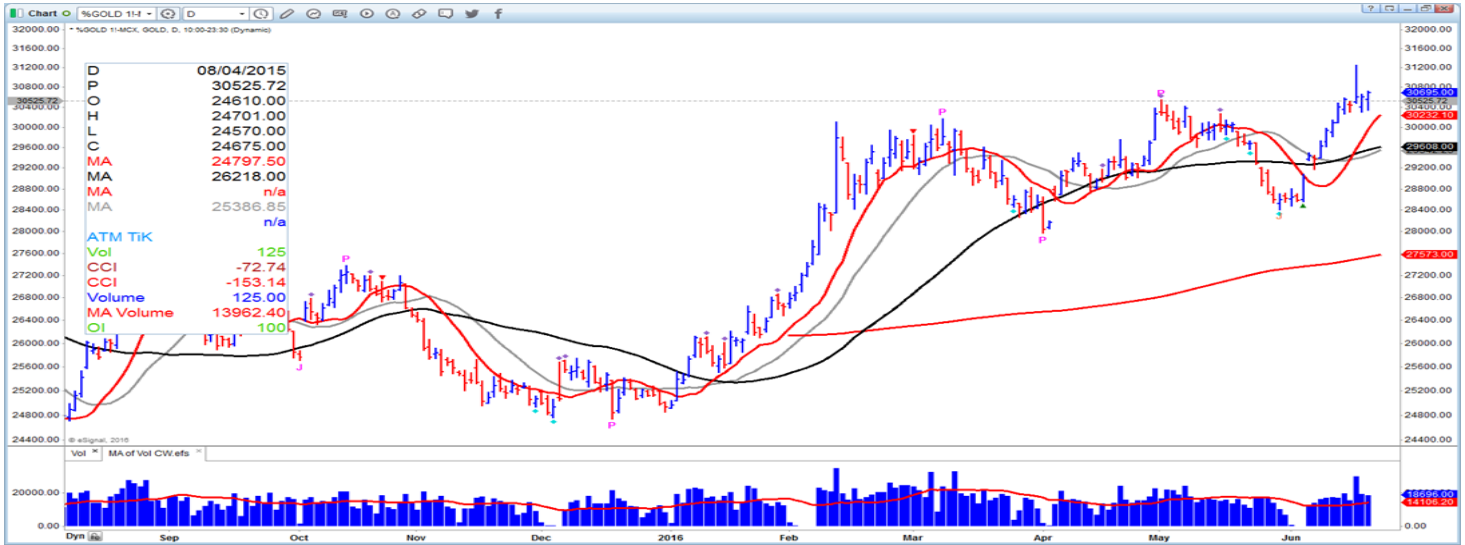


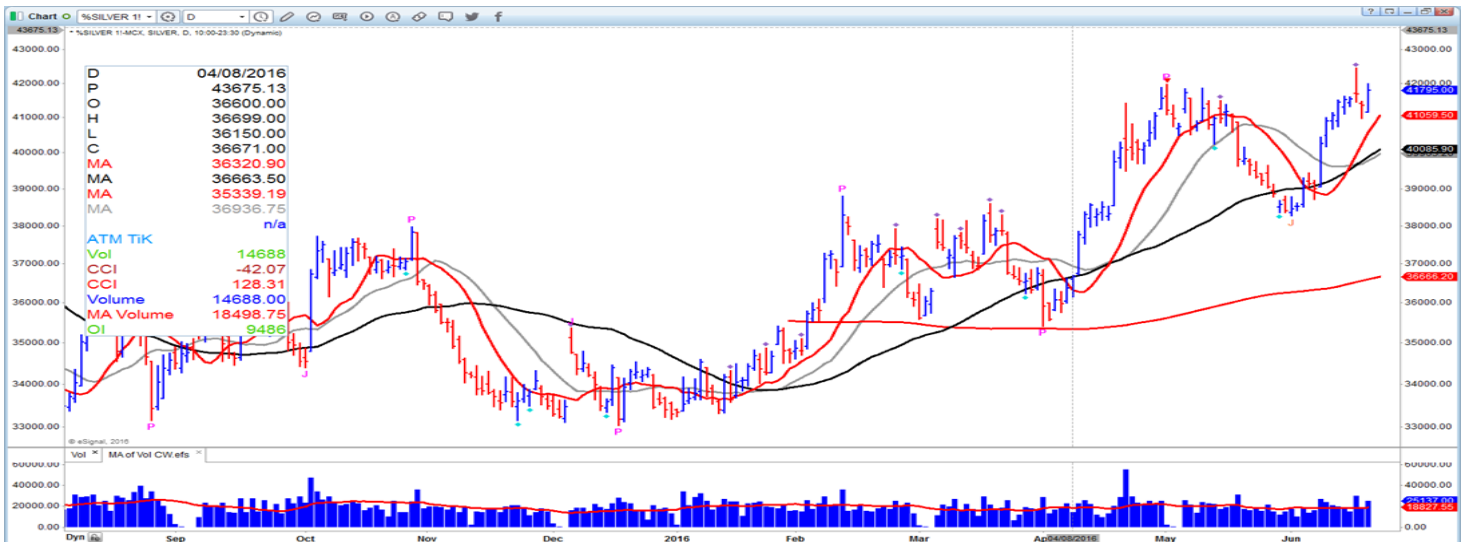
## GOLD : 30695 (CMP)



GOLD HAS GIVEN GOOD BREAK OUT AND FOLLOW THROUGH ALSO IT HAS CREATED UPWARD WAGER PATTERN ONCE IT BREAK DAY HIGH ONE CAN GO LONG WITH LOW AS STOP CURRENTLY TREND IS SUGGESTING MORE UPSIDE.

Commodity Name	S4	S3	S2	S1	PIVOT POINT	R1	R2	R3	R4
GOLD	29424	30059	30200	30447	30588	30835	30976	31223	31752

## SILVER : 41795 (CMP)



SILVER HAS ALSO GIVEN GOOD BREAKOUT AND ON UPSIDE WE FEEL THAT CHANCES OF 41500 WILL ACT AS RESISTANCE AND ON DOWN SIDE 40000 WILL ACT AS SUPPORT .BELOW 40000 NEXT SUPPORT IS AT 38000.

Commodity Name	S4	S3	S2	S1	PIVOT POINT	R1	R2	R3	R4
SILVER	39192	40493	40828	41311	41646	42129	42464	42947	44100

- Equities • Derivatives • Currencies • Commodities • Research • Consultancy • Depository

## CRUDEOIL : 3328 (CMP)



CRUDE OIL HAS GIVEN VERY GOOD BREAKOUT ON UPSIDE 3200 WILL ACT AS RESISTANCE AND ON DOWNSIDE 2880 WILL ACT AS SUPPORT.

Commodity Name	S4	S3	S2	S1	PIVOT POINT	R1	R2	R3	R4
CRUDEOIL	2968	3148	3184	3256	3292	3364	3400	3472	3616

## NATURAL GAS : 185.80 (CMP)



NATURAL GAS HAS GIVEN GOOD BREAKOUT 130 WILL ACT AS RESISTANCE AND ON UPSIDE 150 IS FIRST TARGET.

Commodity Name	S4	S3	S2	S1	PIVOT POINT	R1	R2	R3	R4
NATURALGAS	151.00	168.40	172.20	179.00	182.80	189.60	193.40	200.20	214.60

## COPPER : 312.65 (CMP)



COPPER IS IN DOWNTREND BUT NOW THERE IS GOOD CHANCE THAT SHORT TERM BOTTOM IS IN PLACE WE MAY SEE GOOD SHORT COVERING RALLY. ONLY BELOW 310 ONE SHOULD SHORT ELSE ONE SHOULD BUY IN EVERY DIP TILL 310.

Commodity Name	S4	S3	S2	S1	PIVOT POINT	R1	R2	R3	R4
COPPER	289.62	301.13	303.62	308.13	310.62	315.13	317.62	322.13	331.62

## NICKLE : 623.70 (CMP)



NICKLE 560 IS GOOD SUPPORT ON UPSIDE WE MAY SEE LEVEL OF 630 ABOVE 630 WE MAY SEE LEVEL OF 660.

Commodity Name	S4	S3	S2	S1	PIVOT POINT	R1	R2	R3	R4
NICKEL	573.23	598.47	604.23	613.97	619.73	629.47	635.23	644.97	666.23

## ZINC : 136.05 (CMP)



ZINC IS MAKING NEW BASE AROUND 118. BELOW 118 WE EXPECT LEVELS OF 112-107. AND ABOVE 118 WE CAN SEE LEVEL OF 128-132.

Commodity Name	S4	S3	S2	S1	PIVOT POINT	R1	R2	R3	R4
ZINC	124.02	130.03	131.32	133.68	134.97	137.33	138.62	140.98	145.92

## LEAD: 116.60 (CMP)



LEAD HAS SEEN GOOD RALLY FROM DOWNSIDE IT HAS REACHED AROUND 126 THEN IT HAS START COMING DOWN ON DOWNSIDE 115 IS GOOD SUPPORT .

Commodity Name	S4	S3	S2	S1	PIVOT POINT	R1	R2	R3	R4
LEAD	110.27	113.43	114.17	115.38	116.12	117.33	118.07	119.28	121.97

## || Disclaimer ||

The Information provided by SMS or in newsletter or in any document has been prepared by Affluence Shares And Stocks Private Limited (hereinafter referred to as "ASSPL"). The Information provided by SMS or in newsletter are solely for the personal information of the recipient, and must not be singularly used as the basis of any investment decision. Nothing in this document should be construed as investment or financial advice. Each recipient of this document should make such investigations as they deem necessary to arrive at an independent evaluation of an investment in the securities of the companies referred to in this document (including the merits and risks involved), and should consult their own advisors to determine the merits and risks of such an investment. The investment discussed or views expressed may not be suitable for all investors. This information is strictly confidential. Neither Affluence Shares and Stocks Private Limited, nor its directors, employees or affiliates shall be liable for any loss or damage that may arise from or in connection with the use of this information.

The information contained herein is from publicly available data or other sources believed to be reliable, but we do not represent that it is accurate or complete and it should not be relied on as such. ASSPL or any of its affiliates/ group companies shall not be in any way responsible for any loss or damage that may arise to any person from any inadvertent error in the information contained in this report or SMS. Affluence Shares and Stocks Private Limited has not independently verified all the information contained within this document. Accordingly, we cannot testify, nor make any representation or warranty, express or implied, to the accuracy, contents or data contained within this document. While ASSPL endeavors to update on a reasonable basis the information discussed in this material, there may be regulatory, compliance, or other reasons that prevent us from doing so.

Past performance is not necessarily a guide to future performance. The disclosures of interest statements incorporated in the Information provided by SMS, report or in newsletter are provided solely to enhance the transparency and should not be treated as endorsement of the views expressed in the report. The analyst for this report certifies that all of the views expressed in this report accurately reflect his or her personal views about the subject company or companies and its or their securities, and no part of his or her compensation was, is or will be, directly or indirectly related to specific recommendations or views expressed in this report.

This document is being supplied to you solely for your information, and its contents, information or data may not be reproduced, redistributed or passed on, directly or indirectly. The information given or Information provided by SMS, report or in newsletter is as of the date of the issue date of report or the date on which SMS provided and there can be no assurance that future results or events will be consistent with this information. This information is subject to change without any prior notice. ASSPL reserves the right to make modifications and alterations to this statement as may be required from time to time. However, ASSPL is under no obligation to update or keep the information current.